

**DOCUMENT 00 90 00  
ADDENDUM**

**ADDENDUM NO. [2]                      Date: February 20, 2018**

**RE:                      MEDFORD AREA PUBLIC SCHOOL DISTRICT  
                             ATHLETIC COMPLEX IMPROVEMENTS  
                             1015 WEST BROADWAY  
                             MEDFORD, WISCONSIN 54451  
                             HSR PROJECT NO. 17067**

**FROM:                  HSR Associates, Inc  
                             100 Milwaukee Street  
                             La Crosse, WI 54603  
                             (608) 784-1830**

**To:                      Prospective Bidders**

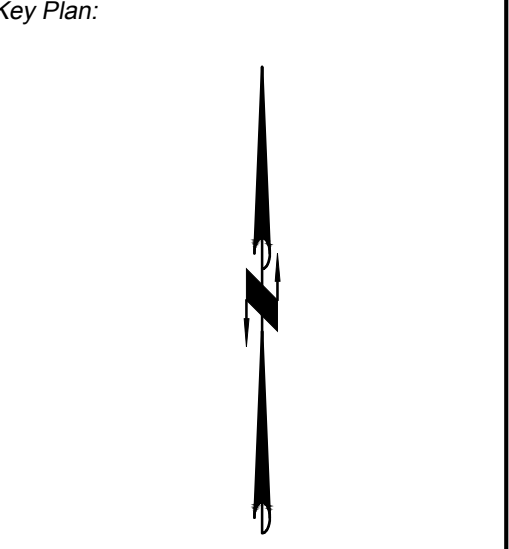
This addendum forms a part of the Contract Documents and modifies the original Bidding Documents dated February 2018. Acknowledge receipt of this Addendum in the space provided on the bid form. Failure to do so may subject the Bidder to disqualification.

This Addendum consists of [1] pages, and [2] 30 x 42 drawings.

**CHANGES TO DRAWINGS**

1. Sheet C106R1: SITE STORM SEWER PLAN 30 x 42 attached hereto
  - a. 247LF of slot drain shall be installed in West "D" area.
2. Sheet C109R: SITE DETAILS 30 x 42 attached hereto
  - a. Modify Detail-1. Install additional base drainage stone up to interior 12" concrete curb edge.

**END OF DOCUMENT 00 90 00**

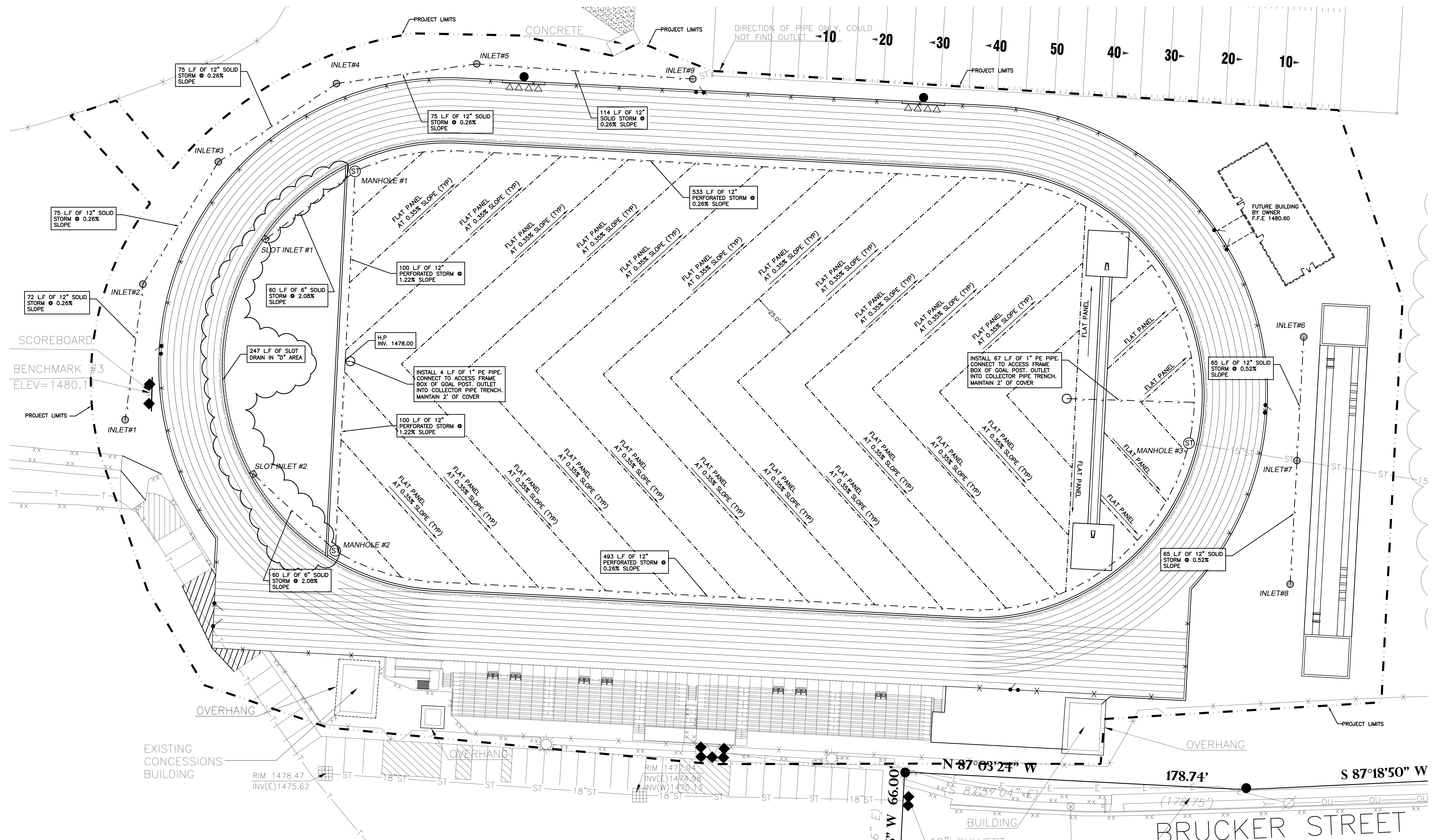


No.	Description	Date

No.	Description	Date

Graphic Scale: 0 20' 40'  
Last Update:

**C106R1**



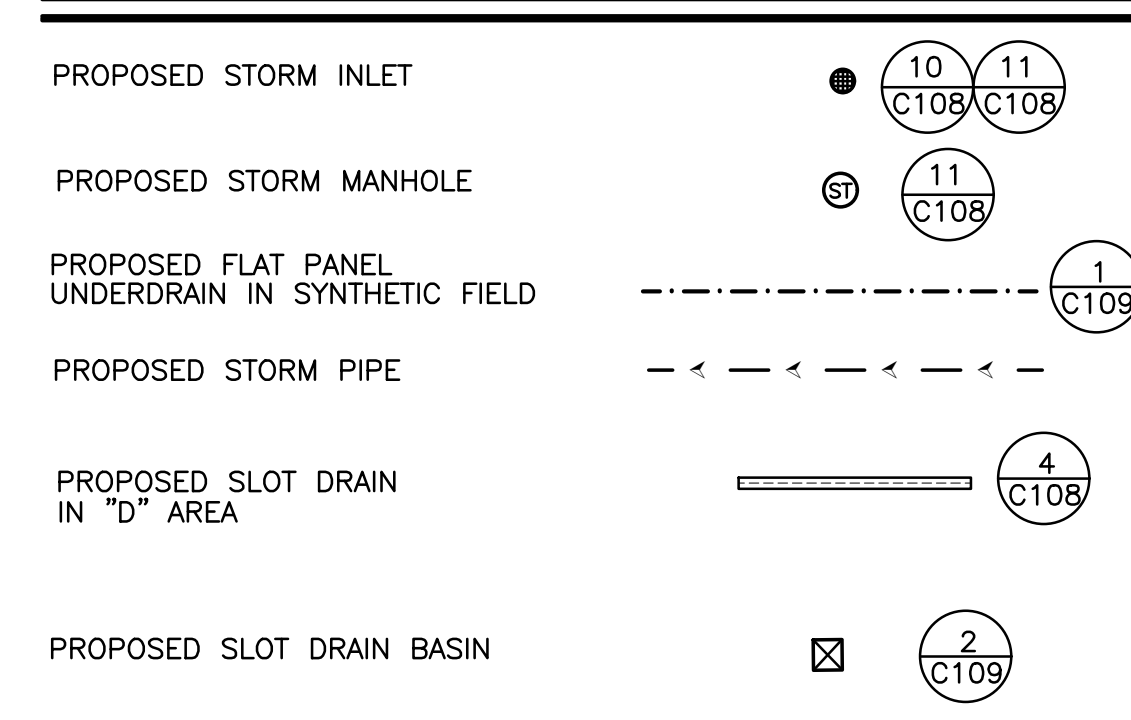
**GENERAL NOTES:**

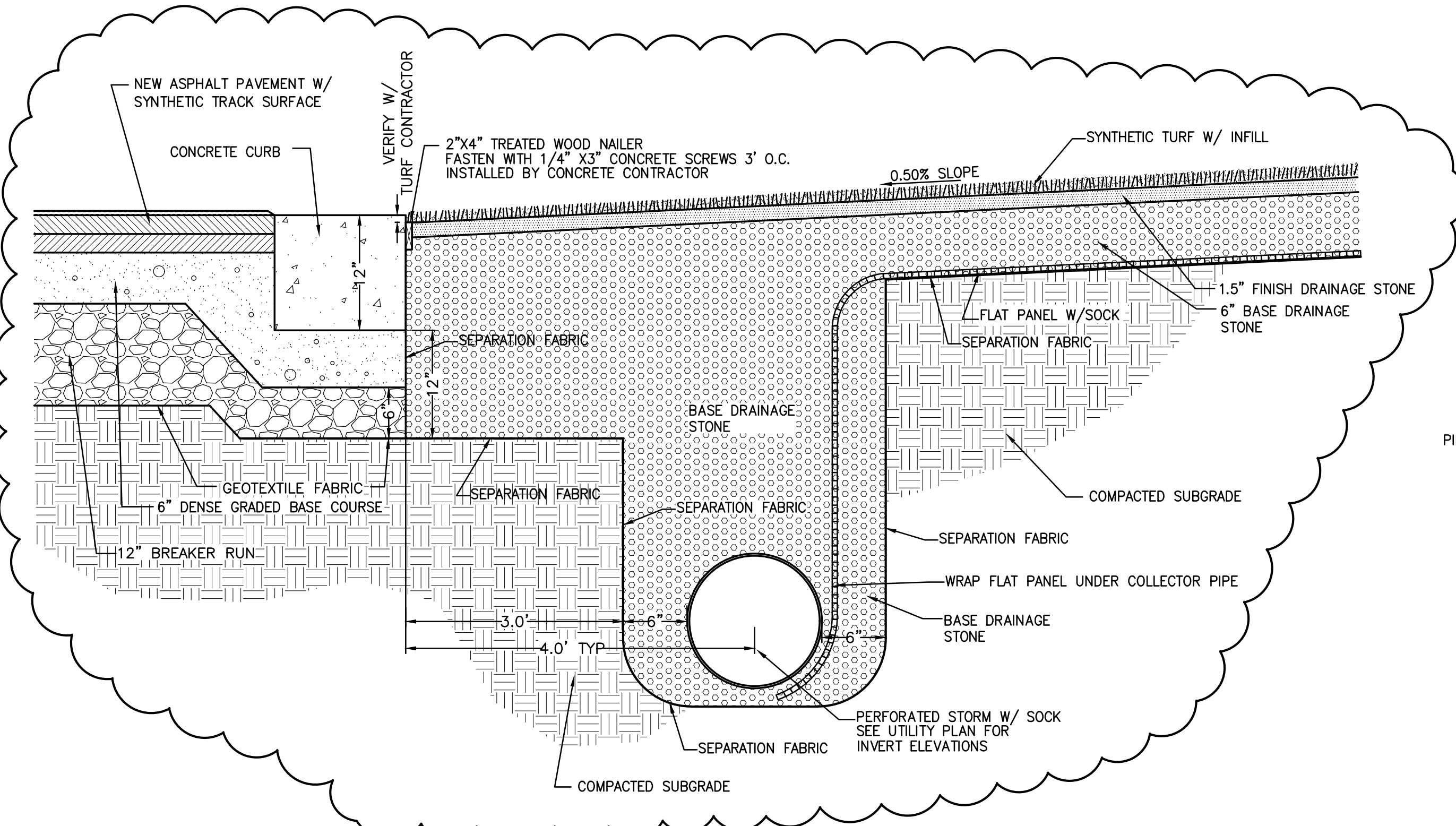
- GRADE, LINE, AND LEVEL TO BE REVIEWED IN THE FIELD BY THE CONSTRUCTION MANAGER.
- COORDINATE ALL UTILITY WORK WITH GAS, ELECTRICAL, (INCLUDING MAIN SERVICE, SITE LIGHTING, CONDUITS AND SIGNAGE) CABLE AND TELEPHONE CONSTRUCTION AND RESPECTIVE TRADES RESPONSIBLE FOR INSTALLATION OF SAID UTILITIES.
- COORDINATE ALL WORK WITHIN THE PUBLIC RIGHT OF WAY WITH THE LOCAL MUNICIPALITY.
- ALL TESTING AND INSPECTION SHALL BE DONE IN ACCORDANCE WITH SPS 382.21.
- THE MUNICIPALITY SHALL BE CONTACTED PRIOR TO ANY EXCAVATION IN THE PUBLIC RIGHT-OF-WAY. THE CONTRACTOR SHALL HAVE HIS TRAFFIC CONTROL PLAN APPROVED PRIOR TO WORK COMMENCING. THE MUNICIPALITY SHALL OPERATE ALL EXISTING WATER VALVES IF NEEDED.
- FIELD VERIFY LOCATIONS AND ELEVATIONS OF ALL EXISTING UTILITY CONNECTIONS PRIOR TO INSTALLATION.
- ALL REQUIRED DIGGERS' HOTLINE LOCATES AND PRIVATE UTILITY LOCATES SHALL BE ORDERED AND PAID FOR BY EACH CONTRACTOR REQUIRING THE LOCATE SERVICE.

**STORM INLET SCHEDULE:**

SLOT INLET #1	SLOT INLET #2	MANHOLE#1	MANHOLE#2	MANHOLE#3
RIM 1479.94 INV 1478.30 DEPTH 1.64 POLYMER CONCRETE BASIN W/ TRASH BUCKET	RIM 1479.94 INV 1478.30 DEPTH 1.64 POLYMER CONCRETE BASIN W/ TRASH BUCKET	RIM 1479.74 INV (N) 1475.89 INV (S) 1476.78 INV (E) 1475.89 INV (W) 1477.05 DEPTH 2.96' 30" MODULAR INLET W/ SOLID H-20 GRATE 6" SUMP	RIM 1479.74 INV (N) 1476.78 INV (S) 1476.78 INV (E) 1477.05 INV (W) 1477.05 DEPTH 2.99' 30" MODULAR INLET W/ SOLID H-20 GRATE 6" SUMP	RIM 1479.74 INV (N) 1474.50 INV (S) 1475.50 INV (E) 1472.93 DEPTH 6.81' 60" I.D. PRECAST CONCRETE MANHOLE, NEENAH R-1733-1 SOLID LID
INLET#1	INLET#2	INLET#3	INLET#4	INLET#5
RIM 1479.00 INV (W) 1476.60 DEPTH 2.40' 15" MODULAR INLET W/ STANDARD H-20 GRATE 6" SUMP	RIM 1479.00 INV (SW) 1476.41 INV (NE) 1476.41 DEPTH 2.59' 15" MODULAR INLET W/ STANDARD H-20 GRATE 6" SUMP	RIM 1479.00 INV (SW) 1476.21 INV (NE) 1476.21 DEPTH 2.79' 15" MODULAR INLET W/ STANDARD H-20 GRATE 6" SUMP	RIM 1479.00 INV (S) 1476.01 INV (E) 1476.01 INV (W) 1476.01 DEPTH 2.99' 15" MODULAR INLET W/ STANDARD H-20 GRATE 6" SUMP	RIM 1479.00 INV (W) 1475.82 INV (E) 1475.82 DEPTH 3.19' 15" MODULAR INLET W/ STANDARD H-20 GRATE 6" SUMP
INLET#6	INLET#7	INLET#8	INLET#9	
RIM 1478.50 INV (S) 1475.34 DEPTH 3.16' 15" MODULAR INLET W/ STANDARD H-20 GRATE 6" SUMP	RIM 1478.50 INV (N) 1475.00 INV (S) 1475.00 INV (E) EX-1470.84 INV (W) EX-1470.84 DEPTH 7.86' 30" MODULAR INLET W/ STANDARD H-20 GRATE 6" SUMP	RIM 1478.50 INV (S) 1475.34 DEPTH 3.16' 15" MODULAR INLET W/ STANDARD H-20 GRATE 6" SUMP	RIM 1478.50 INV (W) 1475.52 INV (E) 1475.52, FIELD VERIFY DEPTH 2.98' 15" MODULAR INLET W/ STANDARD H-20 GRATE 6" SUMP	

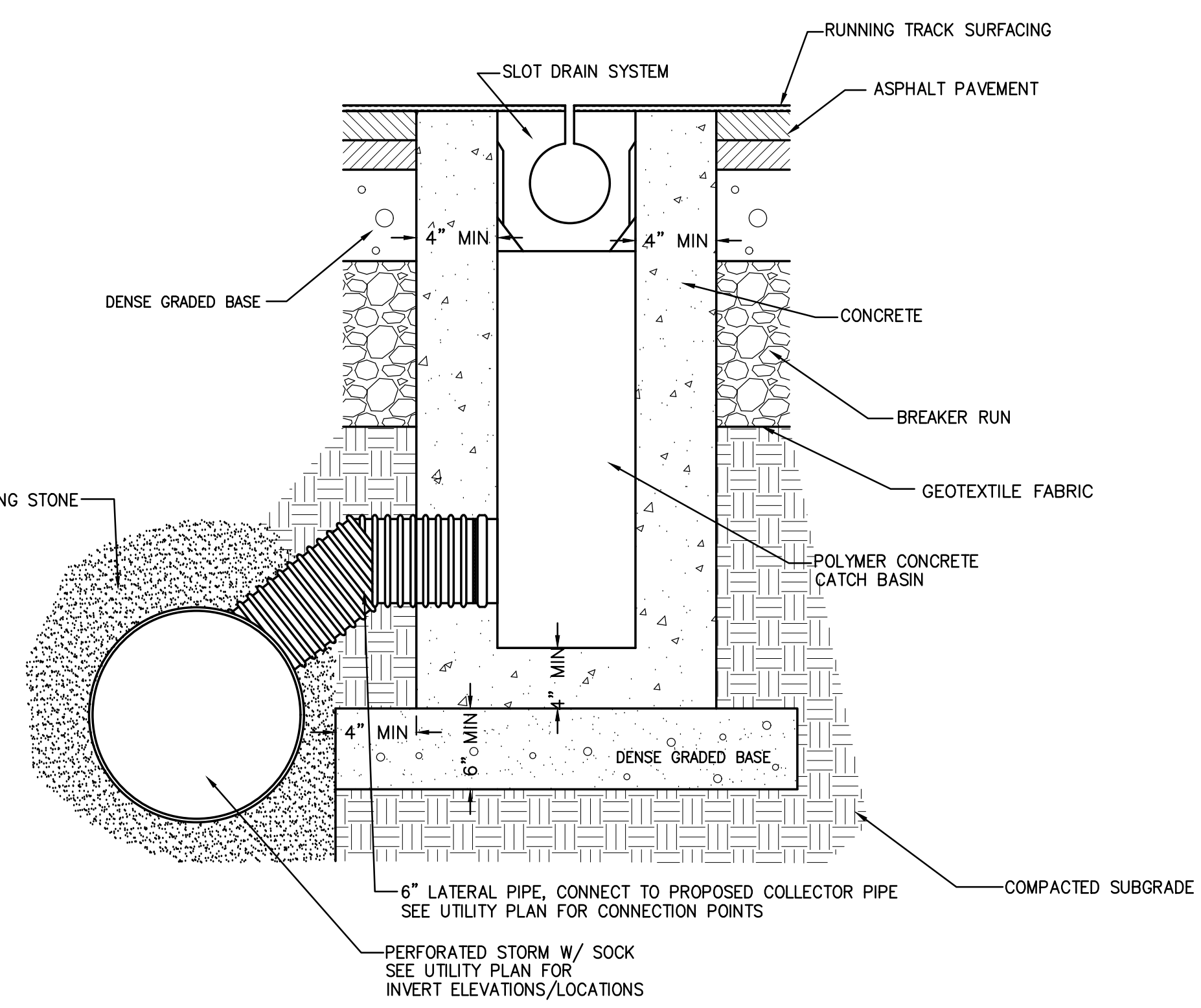
**UTILITY LEGEND:**





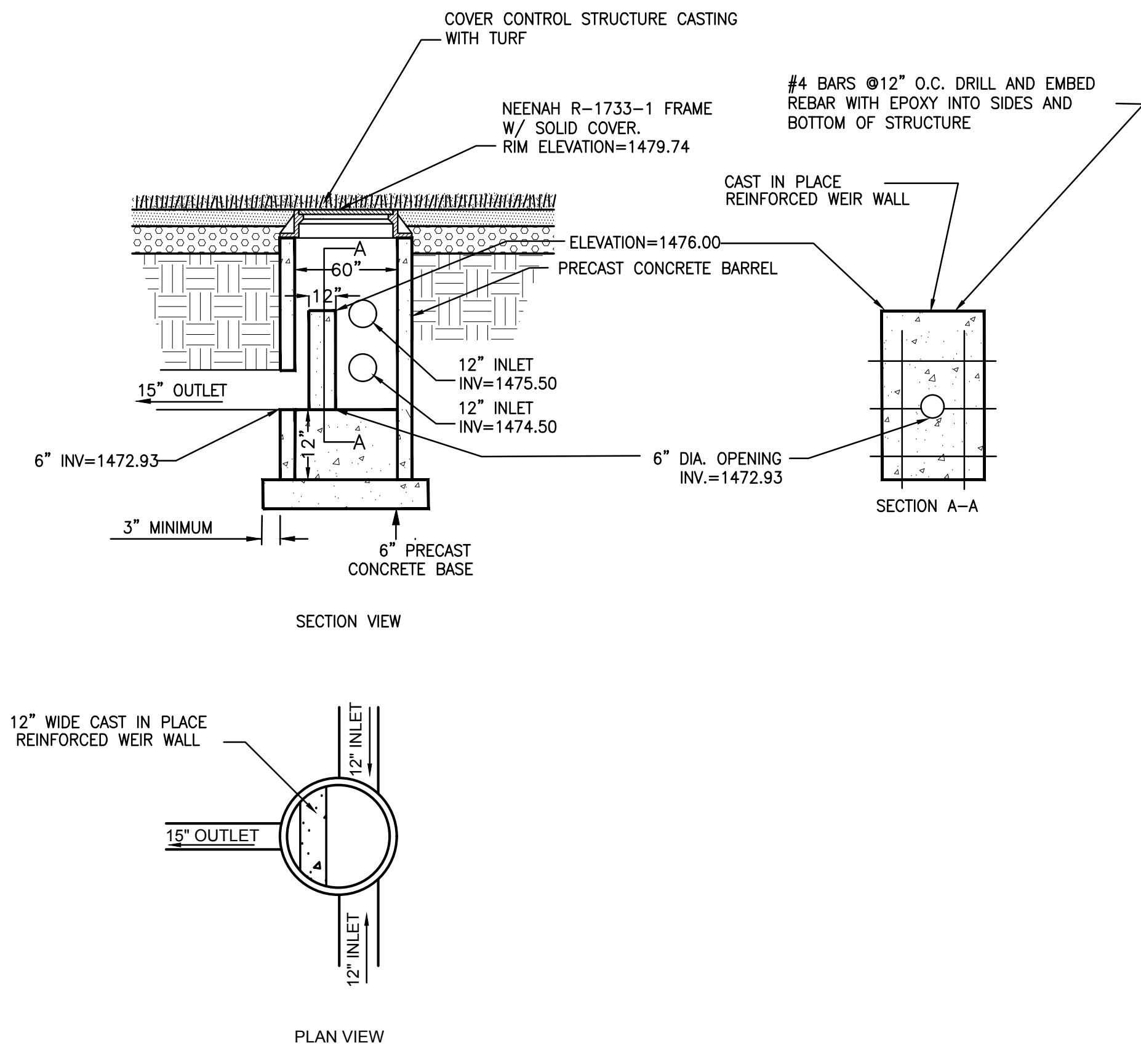
SYNTHETIC TURF SUB-DRAINAGE/ STORM DRAINAGE  
TURF CONNECTION ALONG ASPHALT EDGE

1  
C109



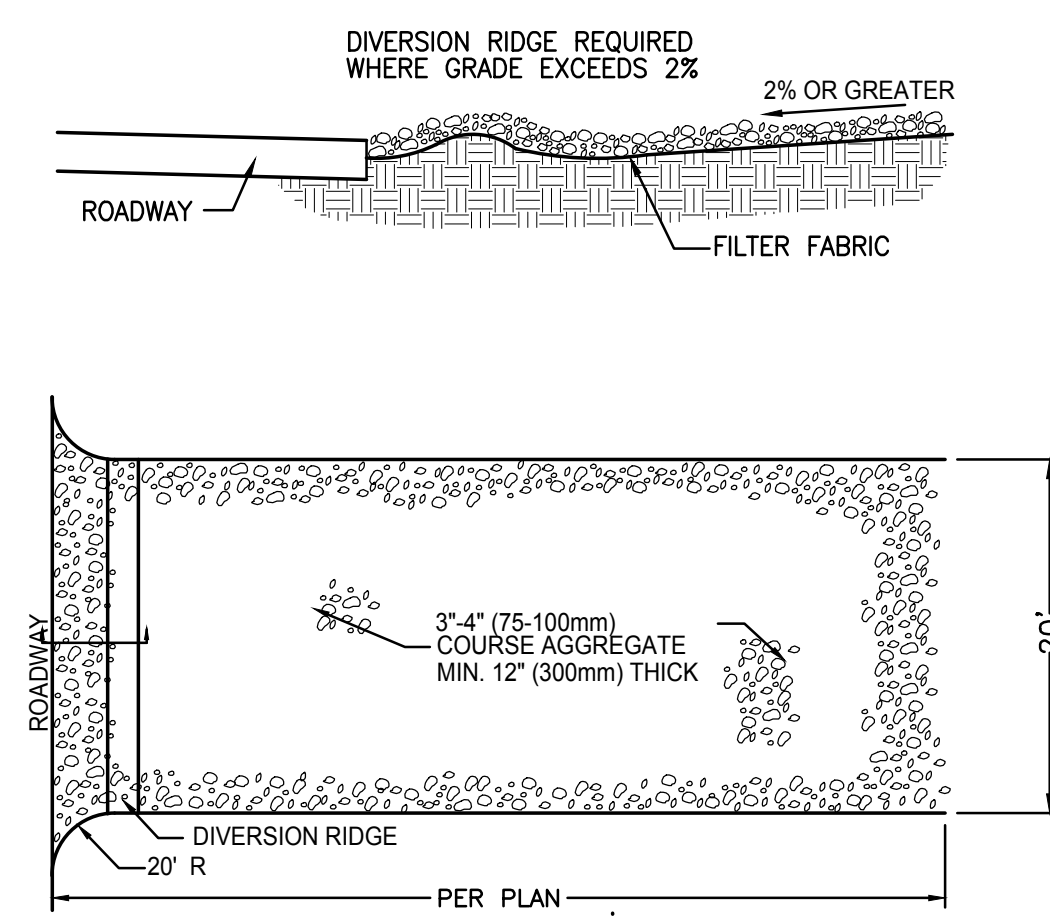
SLOT DRAIN BASIN LATERAL STORM CONNECTION  
IN \"D\" AREA

2  
C109



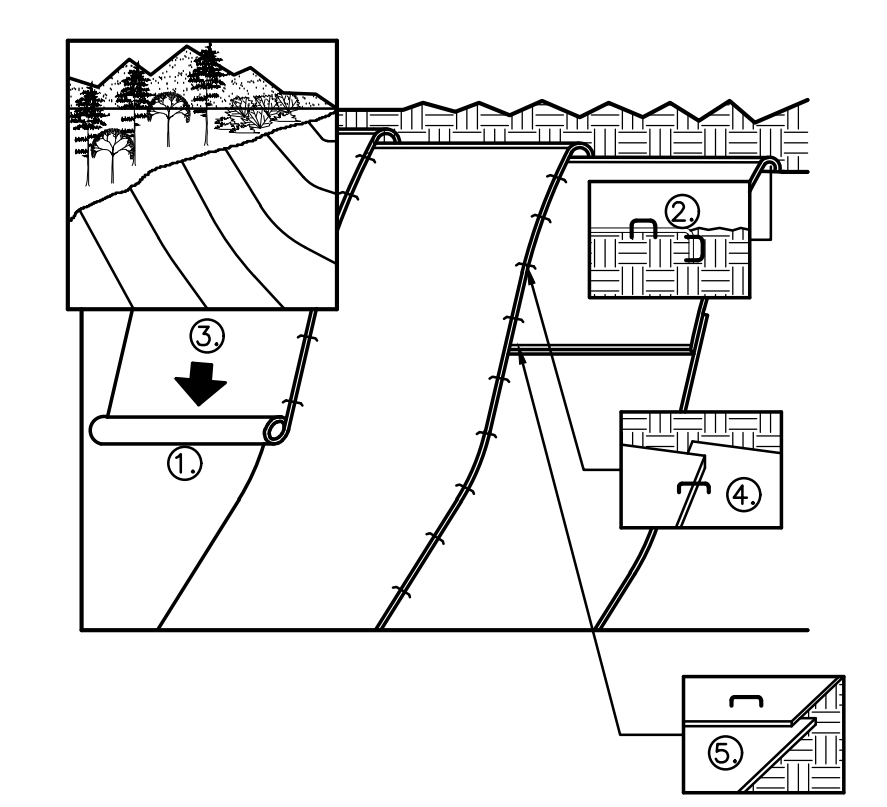
CONTROL STRUCTURE MH#3

3  
C109



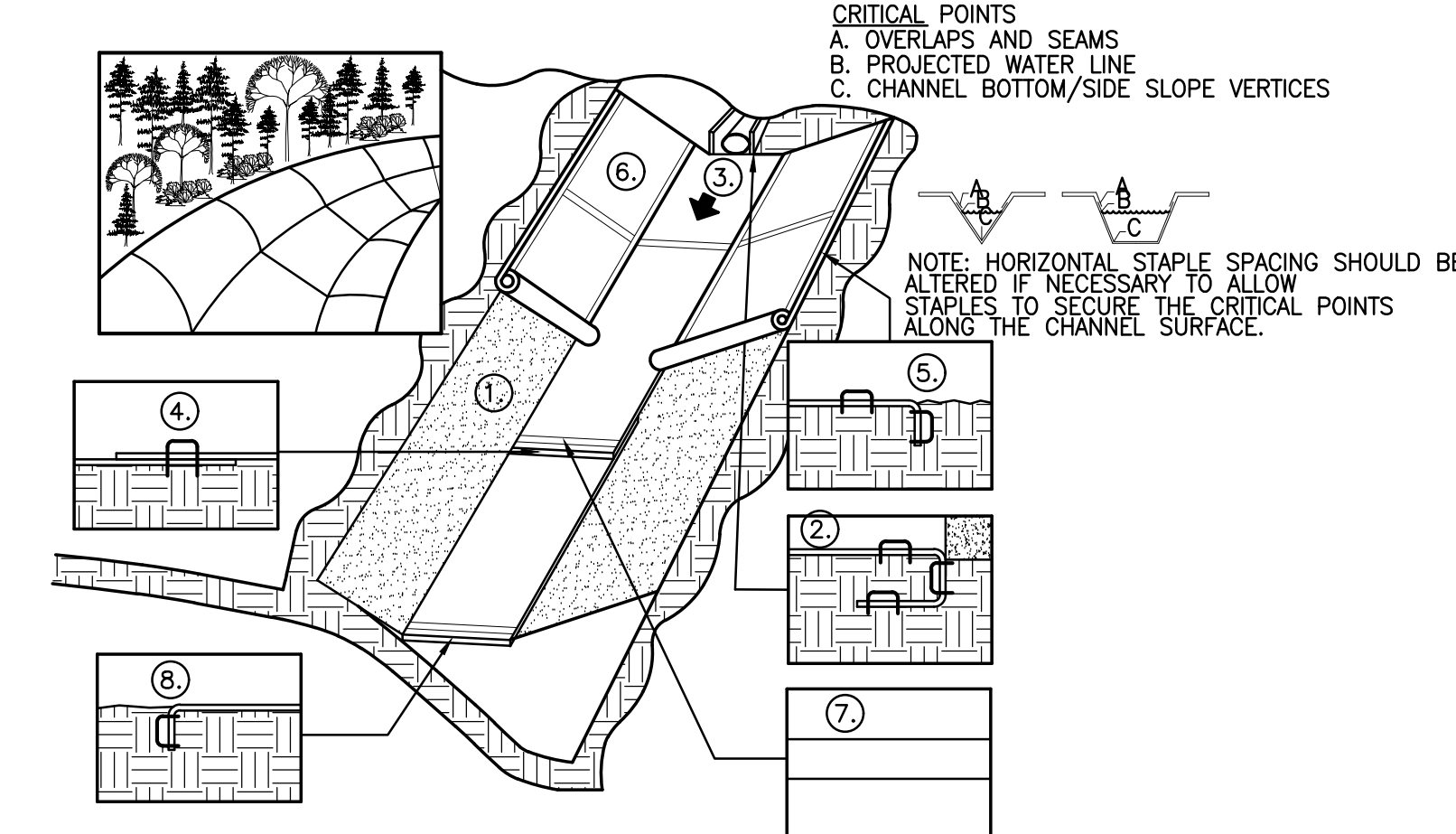
ROCK CONSTRUCTION  
ENTRANCE

4  
C109



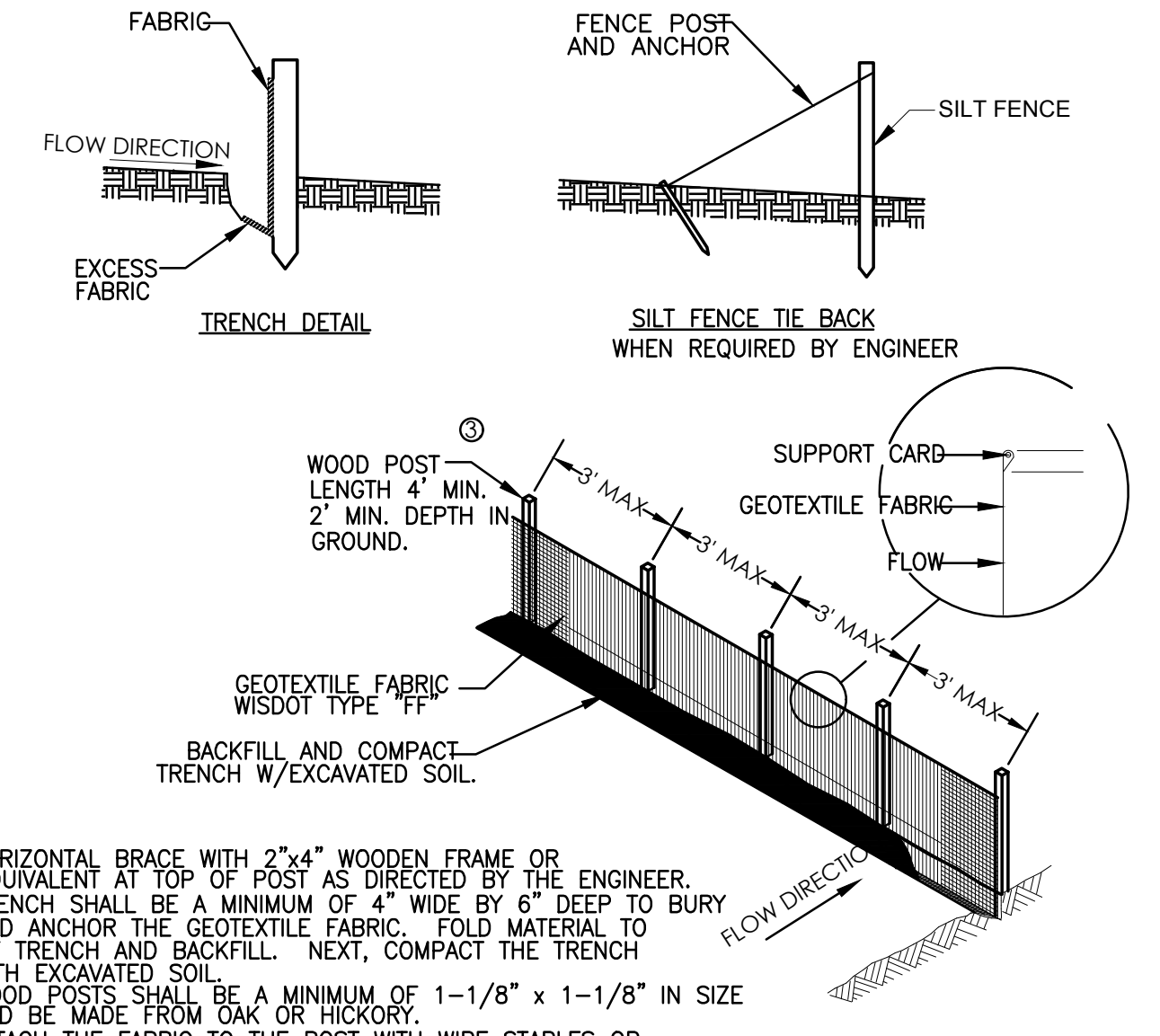
EROSION CONTROL BLANKETS

5  
C109



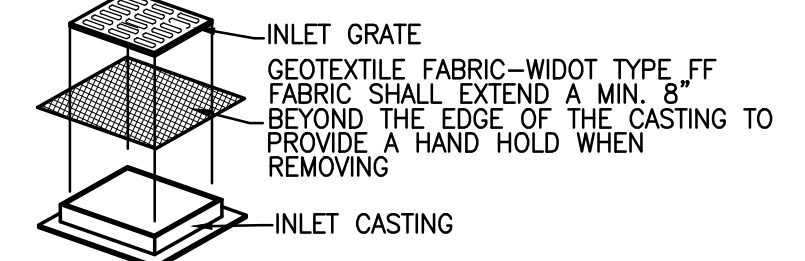
EROSION CONTROL BLANKETS

6  
C109



SILT FENCE

7  
C109



INLET PROTECTION

8  
C109

NOTES:  
1. THE ENTRANCE SHALL BE MAINTAINED IN A CONDITION THAT WILL PREVENT TRACKING OR FLOWING OF SEDIMENT ONTO PUBLIC RIGHT-OF-WAYS. THIS MAY REQUIRE TOP DRESSING, REPAIR AND/OR CLEANOUT ANY MEASURES USED TO TRAP SEDIMENT.  
2. WHEN NECESSARY, WHEELS SHALL BE CLEANED PRIOR TO ENTRANCE ONTO PUBLIC RIGHT-OF-WAY.

GENERAL NOTES:  
1. PREPARE SOIL BEFORE INSTALLING BLANKETS, INCLUDING APPLICATION OF LIME, FERTILIZER AND SEED. NOTE: WHEN USING CELL-O-SEED DO NOT SEED PREPARED AREA. CELL-O-SEED MUST BE INSTALLED WITH PAPER SIDE DOWN.  
2. BEGIN AT THE TOP OF THE SLOPE BY ANCHORING THE BLANKET IN A 6\"/>

GENERAL NOTES:  
1. PREPARE SOIL BEFORE INSTALLING BLANKETS, INCLUDING APPLICATION OF LIME, FERTILIZER, AND SEED. NOTE: WHEN USING CELL-O-SEED DO NOT SEED PREPARED AREA. CELL-O-SEED MUST BE INSTALLED WITH PAPER SIDE DOWN.  
2. BEGIN AT THE TOP OF THE SLOPE BY ANCHORING THE BLANKET IN A 6\"/>

NOTES:  
1. HORIZONTAL BRACE WITH 2x4\"/>

INSTALLATION:  
1. REMOVE INLET GRATE  
2. PLACE FABRIC OVER THE TOP OF THE CASTING  
MAINTENANCE:  
CLEAN AS NEEDED TO MAINTAIN FLOW. DO NOT CUT OR RIP FABRIC TO INCREASE FLOWS. USE OF FABRIC WILL CREATE SHORT TERM PONDING OF WATER. DO NOT USE FABRIC INLET PROTECTION IF ADJACENT BUILDINGS OR PROPERTIES MAY BE DAMAGED BY PONDING WATER. ELEVATIONS ON SITE SHALL BE SUCH THAT ANY PONDING WATER WILL HAVE AN EMERGENCY OVERFLOW POINT AWAY FROM AREAS THAT MAY BE DAMAGED BY FLOODING.

GENERAL NOTES:  
USE ONLY THE FOLLOWING GEOTEXTILE FABRICS THAT ARE APPROVED BY THE WIDOT FOR USE AS INLET PROTECTION: a) LINO INDUSTRIAL FABRICS - GTF 403 b) TIG MIRAFI FILTERWEAVE 401. FOR INLET PROTECTION TYPE C, WITH A CURB BOX, AN ADDITIONAL 18\"/>

No.	Description	Date
#2	Addendum	2-20-2018